

GENERAL INSTRUCTIONS AND CAUTIONS

Note: When welding, attach welder ground only to Hydra-Bed, not to truck frame. Use low-hydrogen rod or wire electrode. NEVER weld to the frame of the truck. Correct installation of the Level-Lok system assures Front to Rear and Side to Side leveling as well as Left to Right centering of the Hydra-Bed. Never obstruct factory overload spring mounting locations.

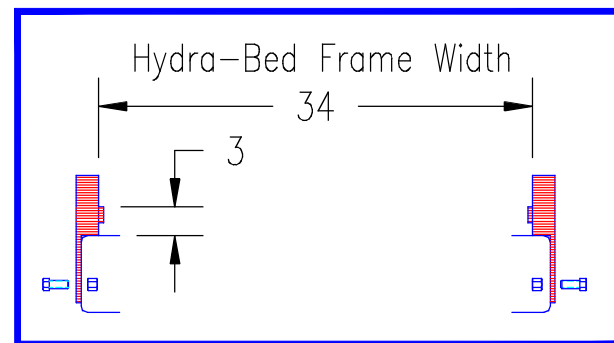
When drilling truck frame, do not damage any part of the braking, fuel or electrical systems.

Remove factory frame narrowing pieces if present.

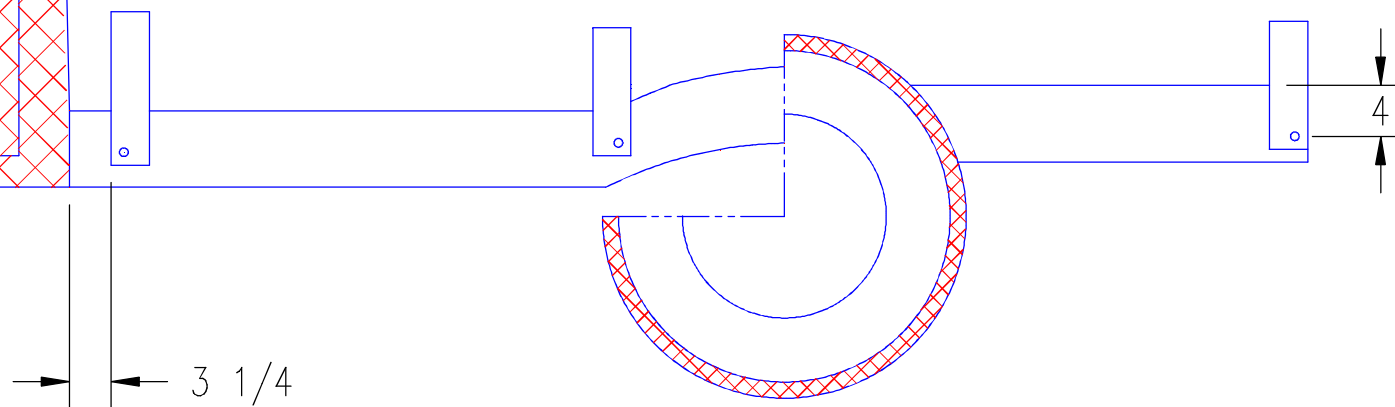
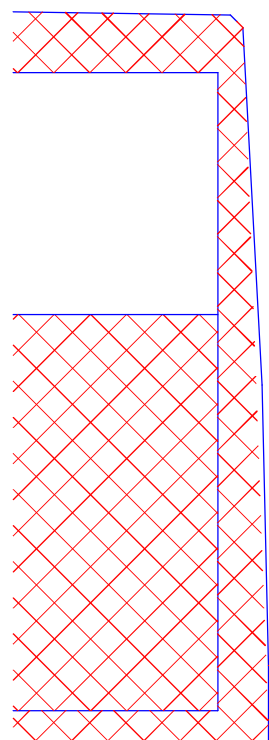
Remove factory box mount pads. Locate front DLL-1 approx 3 1/4" from cab. drill 5/8" hole in truck frame.

Locate center DLL-1 over 3/8" pilot hole. Drill hole to 5/8".

VIEW OF REAR LEVEL-LOKS ON TRUCK FRAME



Locate rear DLL-1 over 1/2" pilot hole approx 1 1/4" from rear of frame. Drill hole to 5/8". Bolt DLL-1 in place.



DLL-1

1980-1993 Dodge

56", 60" & 84" Cab to Axle Single/Dual Wheel

Kit contains 6 strap assemblies. Use 3 strap assemblies per side when mounting an HB 2X0. The additional DLL-1X kit is required when mounting an HB 3X0 or longer Hydra Bed providing 4 straps per side.